



APTITUDE TEST

This test is to be completed in your own hand writing and is estimated to take around 15 minutes to complete.

It is intended solely to test suitability for any sub contractor opening at Tech35, Inc. by criterion that Tech35, Inc. deems important to the success of it's business model.

On completion it must be scanned in .pdf format and returned to Tech35, Inc. with the other stated requirements for application.

Good Luck!

Your Name:

Your email Address:

Question 1:

Five boxes, A through E, are stacked in descending alphabetical order with box A on top. The bottom three boxes are simultaneously removed and placed on top with their vertical order maintained. If this procedure were repeated two more times which box would end up in the middle of the stack?

Answer 1:

Question 2:

A certain metallic cube has a red top, a green bottom, two yellow sides, and a blue front and back. A woman with magnetic boots standing on the red top face walks forward onto the front blue face, turns right and walks three faces, turns left and walks three faces, turns right and walks two faces, and turns to her left and walks one face. What color is the face on which she now stands?

Answer 2:

Question 3:

Frank leaves home. When he tries to return, a man wearing a mask blocks his path.

- 1.) What is Frank doing?
- 2.) What is the masked man's occupation?
- 3.) Where is Frank's "safe place?"

Answer 3:

- 1)
- 2)
- 3)

Question 4:

When examining planets in our solar system, we usually find characteristics shared by multiple planets. Taking this into account, how many planets in our solar system have earthquakes?

Answer 4:

Question 5:

You have written a "to do" list for the day, while executing it you think of a forgotten task which you immediately address. Do you add it to the list and indicate it's completed or just move to the next item?

Answer 5:

Question 6:

Draw a flowchart of decisions made between getting up in the morning, eating breakfast and leaving the house in your personal transportation (or using public transportation if no personal transportation).

Answer 6:

Question 7:

If the Vice-president of the United States should die, who would be President?

Answer 7:

Question 8:

Consider a language which uses the following set of characters:

Small set: { a b c }

Large set: { A B C }

Punctuation set: { x y }

This language must follow the following rules:

1. A punctuation character must end all series.
2. A series can have up to but no more than 4 characters, including punctuation characters.

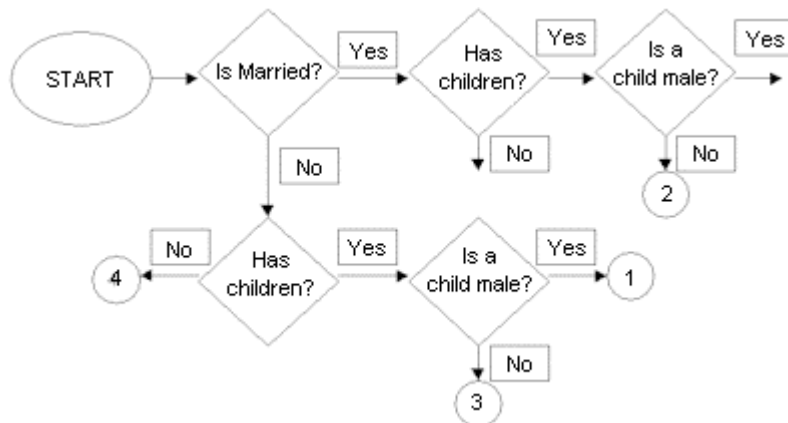
Does the following series follow all the rules of the language defined above?

axBy

Answer 8:

Question 9:

Consider the following flowchart:



What are three characteristics of 1.

Answer 9: